

**ORGANIZATIONAL ANALYSIS**  
**Section 46a -68-82**

In the last filing this section was found to be in compliance and there were no proposals/recommendations.

UConn Health prepared a Job Title and Occupational Category Study in the following manner:

1. **JOB TITLE STUDY** - Each office, position and position classification authorized by the Department of Administrative Services or established by statute is shown arranged into lines of progression that depict the order of jobs through which an employee may advance. Titles without promotional opportunity are listed separately under the category Other - Miscellaneous Titles not in a Line of Progression. Classified and unclassified titles are identified.
2. **OCCUPATIONAL CATEGORY STUDY** - Each office, position classification listed in the job title study is placed in an occupational category with other offices, positions or position classifications having similar job content, compensation schedules and opportunity. Titles within an occupational category are ranked from the highest to lowest compensation schedule. The salary range for each office, position and position classification are noted.
3. **ORGANIZATIONAL CHART** – Illustrate lines of progression and reporting within the Office of Institutional Equity and UConn Health.

JOB CAT	JOB CAT DESC	TITLE
1A	EXECUTIVE	Associate Vice President
		Asst Vice President
		Chief Admin Officer
		Chief Clin Revenue Cycle Offic
		Chief Counsel
		Chief Executive Officer, JDH
		Chief Financial Officer
		CMHC-Asst Chief Psychiatrist
		Compliance Officer
		Controller
		Dean
		Director, CMHC MH/Psych Svcs
		Executive VP/CEO UConn Health
		Vice President
		VP, Ambulatory Care Admin
		VP, Quality & Patient Services
1B	UNIV DIRECTOR	Administrative Director
		Assoc Director, Investigations
		Associate Director, Pharmacy
		Associate Director, Radiology
		Asst Director/Supply Chain Ops
		Director, Ambulatory Access In
		Director, Budget
		Director, Care Coordination
		Director, CMHC Psychologcl Svc
		Director, Epidemiology
		Director, Info Technology
		Director, Nursing
		Director, Parking and Transpor
		Director, Procurement
		Director, Quality & PI - UMG
		Senior Director, Nursing
		Senior Health Attorney
		Snr Director, Hosp Operations
		UCHC Fire Chief
		UCHC Police Chief
		Univ Director
1C	MANAGERS	Academic Admin Manager
		Administrative Manager
		Administrator 1-CMHC/UCHC
		Asst Director, Campus Planning
		Asst Director, Design Svcs
		Asst Director, Fac Mgmt (RC)
		Asst Director, Lab Animal Care
		Asst Director, Multimedia Svcs
		Asst Director, Telecom

		Audit Manager
		Business Services Manager
		Chief Dosimetrist
		Clin Lab Chief Technologist
		Clinical Practice Manager
		Clinical Practice Manager 2
		CMHC Clinical Prog Manager
		Employee Assistance Prog Mngr EAP
		Finance Manager (RC)
		Health Services Admin 2
		Manager, Health Info Managemnt
		Manager, Patient Access
		Manager, Single Billing Office
		Medical Physicist
		Nurse Manager
		Operations Mngr-Facilities Svc
		Pharmacy Manager
		UCHC CMHC Operations Admin
		UHPC-4/Dept Manager
		Univ Asst Director
	UNIV DIRECTOR	Asst Director, Research
2A	HEAD OF DEPARTMENT	Head of Dept/Basic Sci
		Head of Dept/Clinical
2B	PROFESSOR	Professor/Basic Sci
		Professor/Clinical
		Professor/Visiting
		University Professor
2C	ASSOCIATE PROFESSOR	Assoc Prof/Basic Sci
		Assoc Prof/Clinical
2D	ASSISTANT PROFESSOR	Asst Prof/Basic Sci
		Asst Prof/Clinical
2E	INSTRUCTOR	Instructor/Basic Sci
		Instructor/Clinical
3A	REGISTERED NURSE	Clin Sys/Informatics Analyst
		Clinical Info Syst Supervisor
		Nurse Correction
		Staff Nurse CN2
		Staff Nurse CN2 - Outpatient
		Staff Nurse CN3
		Staff Nurse CN3 - Outpatient
		Staff Nurse CN4
3B	NURSING SUPERVISOR	Asst Nursing Manager
		Clinical Nurse Supvr - UHP Sal
		Head Nurse-Correctional
		Supervising Nurse-Correctional
		Total Joint Administrator
3C	SPECIALIZED NURSES	Clinical Case Manager

		Clinical Nurse Specialist
		Clinical Program Coordinator
		Infection Control Specialist 2
		Lactation Nurse
		Nurse Anesthetist
		Nurse Consultant Gen
		Supvr, Clinical Case Manager
3D	CLINICAL SUPERVISORS	Clinical Lab Supervisor
		Clinical Radiologic Supvr
		Histology Supervisor
		Occupational Therapy Supvr
		Oral and Max Radiologic Supvr
		Rehabilitation Services Supvr
		Social Work Supervisor
		Sup Psychologist 1 CL
		Sup Psychologist 2 CL
3E	CLINICAL GROUP	Athletic Trainer
		Biological Safety Officer
		Clinical Documentation Spec
		Clinical Perfusionist
		Clinical Perfusionist Coord
		Dentist
		Diabetes Education Program Coo
		Diabetes Educator
		Executive Staff Asst
		Informatics Pharmacist
		Informatics Pharmacist (RC)
		Inv Drug Pharm/Med Safty Pharm
		Lead Physician Assistant
		Mental Health Clinician
		Neonatal Spec Resp Care
		Neurosurgical Physician Asst
		Occupational Therapist 2-UHP
		Optometrist
		Pathologist's Asst
		Pharmacist-UHP
		Pharmacy Clinical Coord
		Physical Therapist 2 - UHP
		Physician 2
		Physician Assistant - UHP
		Physician Asst - 1199
		Poison Information Spec
		Principal Physician
		Principal Psychiatrist
		Psychologist Clinical
		Quality Assurance Specialist
		Rehabilitation Coordinator

		Research Facilitator
		Staff Physician
		Staff Psychiatrist
		Therapeutic Recreation Spec
	(blank)	Principal Physician
3F	RESEARCH	Clinical Research Assoc 1
		Clinical Research Assoc 2
		Clinical Research Asst 1
		Clinical Research Asst 2
		Clinical Research Asst 3
		Research Analyst
		Research Assistant 1
		Research Assistant 2
		Research Assistant 3
		Research Associate 1
		Research Associate 2
3G	CLINICAL TECHNOLOGIST	Cytotechnologist
		Histotechnologist
		Medical Technologist 2
3H	FINANCE GROUP	Accountant
		Assoc Accountant
		Budget Analyst
		Fiscal Admin Off
		Fiscal Coordinator
		Fiscal Supervisor
		Grants & Contracts Specialist
		Internal Auditor
		Internal Auditor 1 - Medical
		Patient Svcs Accounts Coord
		Reimbursement Analyst 1
		Reimbursement Analyst 2
		Staff Accountant 1
		Staff Accountant 2
		Staff Accountant 3
		Supervising Accountant - UHP
		Supervisor, Patient Access
		Supv Patient Svcs Accts
3I	ADMINISTRATIVE GROUP	Academic Curric Coordinator
		Administrative Officer
		Assistant to the EVP/Dean
		Assoc Compliance Officer
		Asst Radiation Safety Officer
		Childcare Head Teacher
		Childcare Teacher
		Clin Pas Ed Prog Specialist
		Clin Simulation CTR Coordinato
		Coding Trainer

		Comm Based Educ Spec
		Community Health Prog Supvr
		Compliance Specialist
		Educ & Development Spec.
		EEO Investigator
		Employee Assistance Counselor
		Env Health & Safety Spec
		Healthcare/Project Analyst
		HR Consultant
		Interpreter Services Coord
		Librarian 2
		Librarian 3
		Librarian 4
		Med Materials Mngmnt Supvr
		Medical Records Supervisor
		Operations Assoc, Risk Mngmnt
		Personnel Specialist 1
		Personnel Specialist 2
		Planning Specialist
		Practice Relations Liaison
		Procurement Contract Spec
		Procurement Financial Officer
		Program Manager Clinical Ed
		Radiation Safety Officer
		Registrar
		Research Compliance Monitor 1
		Research Compliance Monitor 2
		Sponsored Program Specialist
		Strategic Planner
		Student Affairs Officer
		Talent Acquisition Specialist
		Training & QA Coordinator
		UCH Communications Specialist
		UConn Health Attorney
		Web and Marketing Assoc
3J	ADM PROGRAM COORDINATOR	Adm Program Coordinator
		Admin and Clin Research Coord
		Administrative Coordinator(RC)
3K	SOCIAL WORKER	Behav Hlth Part Hosp Prog Mngr
		Clin Soc Worker
		Clin Soc Worker Licensure Cand
		Professional Counselor
		Social Worker 1
		Social Worker 2
3L	TECHNICAL	Admin & Clin Sys Coord
		Application Analyst 1
		Application Analyst 2

		Application Analyst 3
		Application Architect
		Application Developer 1
		Application Developer 2
		Application Developer 3
		Architect/Electrical Designer
		Business System Analyst
		Clinical Engineer
		CMHC Information Tech Admin
		Electrical Engineer
		Health Attorney
		HRIS Administrator
		HRIS Specialist 2
		Infrastructure Architect
		Instructional Design Spec
		Instructional Technology Spec
		IT Project Manager
		Performance Improvement Spec
		Principal Trainer
		Project Manager 2, Campus Plan
		Project Manager, Campus Plan
		Technical Analyst 1
		Technical Analyst 2
		Technical Analyst 3
		UCH-Emergency Mngmnt Prog Spec
		Web Communication Officer 1
		Web Communication Officer 2
3M	NURSE PRACTITIONER	Adv Nurse Practitioner
		Lead Nurse Practitioner
		Nurse Practitioner
4A	OFFICE ASSISTANT	Office Assistant
4B	PATIENT SERVICE REP	Lead Patient Svcs Rep
		Patient Access Representative
		Patient Svcs Representative
4C	CLERK	Clerk
		Clerk Typist
4D	SECR/CLERICAL	Accounts Receivable Collector
		Adm Fiscal Assistant
		Cash Accounting Clerk
		Data Entry Oper 1
		E.D. Admissions Specialist
		Executive Assistant
		Fiscal Admin Asst
		Fiscal Assistant
		Human Resources Assistant
		Library Technician Assistant
		Mail Handler

		Medical Records Clerk
		Secretary 1
		Secretary 2
		Spec Secretary (Medical)
		Supply Coordinator
		Telecom Operator
		Telecommunication Dispatcher
		Telephone Opr
		Univ Helper
4E	ADM PROGRAM ASSISTANT 1	Adm Program Assistant 1
4F	ADM PROGRAM ASSISTANT 2	Adm Program Assistant 2
4G	CLINICAL OFFICE ASSISTANT	Clinic Office Assistant
		Clinical Office Assistant
5A	CLINICAL/PARAPROFESSIONAL	Clinical Research Technician
		Community Health Specialist
		Community Health Worker
		Lead Respiratory Therapist
		MH Asst 1
		Nurse Aide
		Respiratory Therapist
		Respiratory Therapy Supervisor
5B	TECHNICAL	Admin & Medical Specialty Tech
		Autopsy/Pathology Technician
		Biomedical Tech Specialist
		Biomedical Technician 2
		BioMedical Technician I
		Bone Densitometry Technologist
		Cardiac Testing Tech
		Cardio Sonographer
		Cast Technician
		Cntrl Sterile Proc Instr Spec
		Computed Tomography (CT) Tech2
		Computed Tomography Tech 1
		Dental Lab Tech 2
		Diagnostic Med Sonographer
		Diagnostic Rad Tech
		DM Sonography Technlgst 2
		Electronic Integrated Control
		Embalmer/Coordinator
		Histology Technician
		Lead Cardiovascular Sonographe
		Lead Computed Tomography Tech
		Lead Diagnostic Medical Sonogr
		Lead Network Telecomm Spec
		Lead Nuclear Med Tech
		Lead Radiologic Tech - US/Sono
		Lead Radiologic Tech-IR/SP



		Lead Radiologic Tech-Mamo
		Lead Radiologic Technologist
		Mag Resonance Imaging Tech 2
		Mechanical Systems Specialist
		Medical Laboratory Technician
		Neurodiagnostic Tech
		Nuclear Medicine Technologist
		Ophthalmology Technician
		OR/Anesthesia Tech
		Radiation Therapy Supervisor
		Radiation Therapy Technologist
		Research Technician
		Spec Dental Lab Tech
		Spec Radiologic Tech-IR/SP
		Spec Radiologic Tech-Mamo
		Spec Radiologic Technologist
		Staff Radiological Tech
		Surgical Technologist 1
		Surgical Technologist 2
		Telecommunication Analyst/Coor
5C	HEALTH CARE SUPPORT	Coding Reimbursement Spec
		Dental Auxiliary Instructor
		Diagnostic Imaging Assistant
		Information Specialist
		Laboratory Assistant 2
		Laboratory Assistant 3
		Lead Med Records Coding Tech
		Med Rec Spec 1
		Med Rec Spec 2
		Medical Records Coding Tech
		Pharmacy Technician
		Pharmacy Technician Coord
		Pharmacy Technician Trainee
		Phlebotomist - 1199
		Preclinical Educ Specialist
		Purchasing and Inventory Spec
		Research Safety Spec 1
		Research Safety Spec 2
5D	MEDICAL ASSTS	Medical Assistant
5E	PARAPROFESSIONAL/ADMIN	Academic Computing Spec II
		Account Careers Trainee
		Admin & Clin Sys Coord (RC)
		Biomedical Communication Supvr
		Clinical Coordinator
		Computer Graphics Specialist
		Desktop Technician I
		Desktop Technician II

		HR Coordinator
		Human Resources Associate
		Library Technican 2
		Library Technician 1
		Multi Media Specialist 1
		Multimedia Specialist 2
		Network Telecom Specialist
		Research Database Manager
		Systems Coordinator
		Visual Media Designer
5F	DENTAL ASSISTANT	Dental Asst
		Dental Hygienist
		Dental Hygienist 1
		Lead Dental Asst
5G	LPN	LPN
6A	QUALIFIED CRAFT WORKERS	Qual Crft Wrkr-A&E Mech
		Qual Crft Wrkr-Carpenter
		Qual Crft Wrkr-Elect
		Qual Crft Wrkr-HVACR
		Qual Crft Wrkr-Lock
		Qual Crft Wrkr-Painter
		Qual Crft Wrkr-Plumber
		Skilled Maintainer
7A	PROTECTIVE SERVICES	Bldg & Grnds Patrol Off
		Detective (Unclassified)
		Fire Lieutenant
		Firefighter
		Police Lieutenant - Unclassifi
		Police Master Sergeant
		Police Officer - Unclassified
		Police Sergeant - Unclassified
		University Fire Captain
7B	CUSTODIAN	Custodian
		Lead Custodian
		Supervising Custodian
7C	OTHER SERVICE/MAINTNANCE	Animal Care Supervisor
		Animal Care Tech
		Animal Care Washroom Tech
		Asst Supervisor of CSSS
		Cent Sterile Proc & Dist Aide
		Dental Supply Assistant
		Duplicating Technician 2
		Environmntl Contrl Maintainer
		General Trades Worker
		Lab Aide
		Lab Animal Tech Svcs Spec
		LD Ctl St Sup Ad

		Lead Transport Aide
		Lead Transport Aide (RC)
		Maintainer
		Maintainer (Drive/Equip Oper)
		Maintenance Supv 2 (Grounds)
		Mat Stor Supv 2
		Material Mngmnt Supervisor
		MTCE Spv 1 HVA
		MTCE Spv 2 Car
		MTCE Spv 2 Elect
		MTCE Spv 2 HVAC
		MTCE Spv 2 Plum
		Spvr, Sterile Proc & Distr
		Stationary Engineer
		Storekeeper
		Storekeeper Assistant
		Transport Aide

Emp Count
-----------

6
---

9
---

1
---

1
---

1
---

1
---

1
---

1
---

1
---

1
---

2
---

1
---

1
---

1
---

1
---

1
---

1
---

1
---

1
---

1
---

1
---

1
---

1
---

1
---

1
---

1
---

1
---

7
---

3
---

1
---

1
---

1
---

1
---

1
---

1
---

1
---

1
---

36
----

9
---

8
---

1
---

1
---

1
---

1
---

1
---

1
---

1
---

1
13
1
1
5
7
4
1
2
8
2
1
1
2
15
4
2
1
1
2
1
5
14
62
62
2
1
40
66
53
168
6
16
3
1
159
71
39
36
20
2
22
1
60
17
1
17

10
1
2
1
15
1
1
7
3
2
1
1
5
2
9
3
1
1
2
3
2
8
1
1
2
2
1
2
2
3
1
2
4
1
1
16
3
15
1
21
1
5
8
3
1
7
1

3
3
2
1
1
9
3
12
16
12
2
18
22
7
27
13
1
12
36
5
1
1
1
1
2
1
2
1
7
8
4
1
10
1
2
1
7
3
21
1
3
1
2
10
1
1
4

3
1
1
7
1
1
1
1
1
3
1
3
3
2
1
2
1
2
5
2
2
8
1
1
1
1
2
2
7
2
1
4
1
2
1
1
110
1
1
1
58
1
19
1
13
8
17
13



8
16
2
4
27
1
18
2
1
1
1
2
3
10
3
2
7
1
8
3
1
9
11
15
1
2
1
11
1
59
52
2
22
86
38
27
5
24
5
3
7
26
1
5
1
1
1



1
2
5
1
4
1
2
12
11
1
5
1
2
3
4
1
4
1
24
1
17
7
1
1
11
5
1
8
4
13
23
2
2
7
1
1
4
1
163
1
1
1
1
17
1
5
16

1
18
2
2
1
2
2
1
5
1
37
3
1
6
110
1
3
6
10
2
3
6
2
13
1
4
7
1
2
10
5
4
43
1
8
1
7
4
1
5
1
2
12
2
4
1
1

1
1
2
4
1
2
3
3
1
1
2
1
1
2
9
22
6

**UNIVERSITY OF CONNECTICUT HEALTH  
ORGANIZATIONAL ANALYSIS AS AT 6/30/2017  
POSITION TITLES WITHIN OCCUPATIONAL CATEGORY  
RANKED BY COMPENSATION SCHEDULE HIGHEST TO LOWEST**

	TITLE	ANNUAL SALARY		COMPENSATION SCHEDULE			
		MIN	MAX	MIN	-	MAX	UNCLASSIFIED
<b>1 - EXECUTIVE, ADMINISTRATIVE &amp; MANAGERIAL</b>							
<b>1A</b>							
	Dean	326,136	420,000				FAC
	Associate Vice President	155,000	231,486				MGR
	Asst Vice President	131,000	201,400				MGR
	Chief Admin Officer	258,000	258,000				MGR
	Chief Clin Revenue Cycle Offic	197,000	197,000				MGR
	Chief Counsel	250,000	250,000				MGR
	Chief Executive Officer, JDH	350,000	350,000				MGR
	Chief Financial Officer	270,000	270,000				MGR
	CMHC Medical Director	235,000	235,000				MGR
	CMHC-Asst Chief Psychiatrist	207,942	207,942				MGR
	Compliance Officer	161,999	161,999				MGR
	Controller	153,000	153,000				MGR
	Director, CMHC MH/Psych Svcs	262,086	262,086				MGR
	Executive VP/CEO UConn Health	685,000	685,000				MGR
	Vice President	250,000	250,000				MGR
	VP, Ambulatory Care Admin	220,000	220,000				MGR
	VP, Quality & Patient Services	280,000	280,000				MGR
<b>1B</b>							
	Senior Health Attorney	175,000	175,000				MGR
	Snr Director, Hosp Operations	173,337	173,337				MGR
	Director, Care Coordination	166,000	166,000				MGR
	Senior Director, Nursing	166,000	166,000				MGR
	Director, CMHC Psychologcl Svc	160,916	160,916				MGR
	UCHC Police Chief	144,200	144,200				MGR
	Associate Director, Pharmacy	137,104	137,104				MGR
	Director, Nursing	136,500	175,000				MGR
	Director, Quality & PI - UMG	130,354	130,354				MGR
	Director, Info Technology	125,000	142,438				MGR
	Director, Budget	120,000	120,000				MGR
	UCHC Fire Chief	119,450	119,450				MGR
	Director, Epidemiology	114,937	114,937				MGR
	Administrative Director	112,110	112,110				MGR
	Assoc Director, Investigations	107,420	107,420				MGR
	Director, Procurement	106,502	106,502				MGR
	Associate Director, Radiology	99,750	99,750				MGR
	Director, Parking and Transpor	95,000	95,000				MGR
	Univ Director	95,000	172,602				MGR
	Director, Ambulatory Access In	88,000	88,000				MGR
	Asst Director/Supply Chain Ops	88,005	88,005	88,005		115,274	UH 14
<b>1C</b>							
	Medical Physicist	190,498	199,125				MGR
	Chief Dosimetrist	133,515	133,515				MGR

	TITLE	ANNUAL SALARY		COMPENSATION SCHEDULE				
		MIN	MAX	MIN	-	MAX	UNCLASSIFIED	CLASSIFIED
	UCHC CMHC Operations Admin	119,851	119,851					MGR
	Manager, Medical Staffing	110,321	110,321					MGR
	Audit Manager	108,165	108,165					MGR
	Univ Asst Director	107,000	126,887					MGR
	Administrator 1-CMHC/UCHC	104,666	104,666					MGR
	Pharmacy Manager	100,000	137,000					MGR
	Employee Assistance Prog Mngr	99,996	99,996					MGR
	Nurse Manager	96,507	120,000					MGR
	Clin Lab Chief Technologist	96,344	96,344					MGR
	Health Services Admin 2	94,703	109,236					MGR
	CMHC Clinical Prog Manager	93,266	130,480					MGR
	Manager, Health Info Managemnt	92,000	92,000					MGR
	Academic Admin Manager	82,000	130,410					MGR
	Manager, Patient Access	76,000	76,000					MGR
	Administrative Manager	75,000	102,071					MGR
	Manager, Single Billing Office	70,000	70,000					MGR
	Asst Director, Campus Planning	120,307	120,307	91,375		120,308	UH 15	
	Asst Director, Design Svcs	120,307	120,307	91,375		120,308	UH 15	
	Asst Director, Telecom	115,274	115,274	88,005		115,274	UH 14	
	Finance Manager (RC)	97,074	97,074	88,005		115,274	UH 14	
	Asst Director, Fac Mgmnt (RC)	110,219	110,219	84,552		110,220	UH 13	
	Asst Director, Lab Animal Care	95,950	95,950	84,552		110,220	UH 13	
	Asst Director, Multimedia Svcs	84,552	84,552	84,552		110,220	UH 13	
	Clinical Practice Manager 2	79,934	95,077	77,439		100,132	UH 11	
	Clinical Practice Manager	78,416	95,077	73,695		95,077	UH 10	
	Business Services Manager	73,694	95,077	73,695		95,077	UH 10	
	Operations Mngr-Facilities Svc	73,694	95,077	73,695		95,077	UH 10	
<b>2 - FACULTY</b>								
<b>2A</b>								
	Head of Dept/Clinical	228,362	603,125					FAC
	Head of Dept/Basic Sci	159,624	325,722					FAC
<b>2B</b>								
	University Professor	600,455	600,455					FAC
	Professor/Visiting	248,000	290,000					FAC
	Professor/Clinical	142,280	892,962					FAC
	Professor/Basic Sci	113,973	275,000					FAC
<b>2C</b>								
	Assoc Prof/Basic Sci	78,197	176,185					FAC
	Assoc Prof/Clinical	117,770	1,102,170					FAC
<b>2D</b>								
	Asst Prof/Basic Sci	56,800	225,000					FAC
	Asst Prof/Clinical	71,000	677,000					FAC
<b>2E</b>								
	Instructor/Basic Sci	60,000	70,000					FAC
	Instructor/Clinical	43,330	101,941					FAC
<b>3 - PROFESSIONAL NON-FACULTY</b>								
<b>3A</b>								
	Clinical Info Syst Supervisor	95,950	95,950	84,552		110,220	UH 13	
	Clin Sys/Informatics Analyst	84,968	100,131	77,439		100,132	UH 11	

	TITLE	ANNUAL SALARY		COMPENSATION SCHEDULE				
		MIN	MAX	MIN	-	MAX	UNCLASSIFIED	CLASSIFIED
	Staff Nurse CN4	89,981	89,981	69,784		89,981	UH 09	
	Staff Nurse CN3	74,339	84,947	65,812		84,948	UH 08	
	Staff Nurse CN3 - Outpatient	82,826	84,947	65,812		84,948	UH 08	
	Staff Nurse CN2	61,734	79,893	61,735		79,893	UH 07	
	Staff Nurse CN2 - Outpatient	65,770	79,893	61,735		79,893	UH 07	
	Nurse Correction	61,464	61,464	61,464		81,349	FP 21	
	Nurse Correction	53,781	73,214	61,464		81,349	HC 21	
<b>3B</b>								
	Total Joint Adminstrator	103,506	103,506					CFD
	Supervising Nurse-Correctional	73,583	98,717	84,095		112,820	HC 28	
	Head Nurse-Correctional	68,646	92,570	76,274		102,856	HC 26	
	Asst Nursing Manager	94,141	94,141	73,944		94,141	UA 09	
	Asst Nursing Manager	78,499	89,107	69,972		89,108	UA 08	
	Clinical Nurse Supvr - UHP Sal	81,016	81,016	69,784		89,981	UH 09	
	Asst Nursing Manager	71,947	84,053	65,895		84,053	UA 07	
<b>3C</b>								
	Nurse Anesthetist	126,152	176,280	126,152		176,280	UH 22	
	Clinical Nurse Specialist	98,821	110,219	84,552		110,220	UH 13	
	Infection Control Specialist 2	101,670	107,349	84,552		110,220	UH 13	
	Supvr, Clinical Case Manager	110,219	110,219	84,552		110,220	UH 13	
	Nurse Consultant Gen	73,583	73,583	84,095		112,820	HC 28	
	Clinical Program Coordinator	81,037	81,037	81,037		105,144	UH 12	
	Clinical Case Manager	77,438	100,131	77,439		100,132	UH 11	
	Lactation Nurse	78,416	78,416	73,695		95,077	UH 10	
<b>3D</b>								
	Sup Psychologist 2 CL	116,644	126,272	107,724		144,311	HC 35	
	Sup Psychologist 1 CL	99,008	105,934	95,535		129,397	FP 32	
	Sup Psychologist 1 CL	83,593	101,811	95,535		129,397	HC 32	
	Clinical Radiologic Supvr	84,968	90,022	77,439		100,132	UH 11	
	Occupational Therapy Supvr	100,131	100,131	77,439		100,132	UH 11	
	Rehabilitation Services Supvr	79,934	95,077	77,439		100,132	UH 11	
	Social Work Supervisor	84,968	100,131	77,439		100,132	UH 11	
	Clinical Lab Supervisor	81,016	89,981	69,784		89,981	UH 09	
	Histology Supervisor	76,544	89,981	69,784		89,981	UH 09	
	Oral and Max Radiologic Supvr	72,218	72,218	65,812		84,948	UH 08	
<b>3E</b>								
	Principal Physician	198,994	219,565	178,402		219,565	RZ 14	
	Principal Psychiatrist	193,835	204,131	178,402		219,565	RZ 14	
	Staff Physician	157,810	185,266	157,810		185,266	RZ 13	
	Staff Psychiatrist	185,266	185,266	157,810		185,266	RZ 13	
	Physician 2	139,984	139,984	128,440		151,549	RZ 09	
	Clinical Perfusionist Coord	145,184	165,360	119,975		165,360	UH 21	
	Clinical Perfusionist	127,941	155,480	114,172		155,480	UH 20	
	Dentist	97,807	122,359	111,780		139,839	DX 05	
	Optometrist	116,007	116,007	111,780		132,580	RX 05	
	Pharmacy Clinical Coord	119,142	138,424	103,709		138,424	UH 18	
	Lead Physician Assistant	118,747	132,350	99,965		130,562	UL 16	
	Informatics Pharmacist	131,269	131,269	99,050		131,269	UH 17	
	Informatics Pharmacist (RC)	131,269	131,269	99,050		131,269	UH 17	
	Inv Drug Pharm/Med Safty Pharm	113,381	120,536	99,050		131,269	UH 17	



	TITLE	ANNUAL SALARY		COMPENSATION SCHEDULE				
		MIN	MAX	MIN	-	MAX	UNCLASSIFIED	CLASSIFIED
	Neurosurgical Physician Asst	124,093	131,269	99,050		131,269	UH 17	
	Pharmacist-UHP	98,176	125,362	94,765		125,362	UH 16	
	Physician Assistant - UHP	94,765	125,362	94,765		125,362	UH 16	
	Physician Asst - 1199	101,421	101,421	88,296		120,079	FP 30	
	Psychologist Clinical	77,259	77,259	88,296		120,079	HC 30	
	Diabetes Education Program Coo	110,219	110,219	84,552		110,220	UH 13	
	Pathologist's Asst	110,219	110,219	84,552		110,220	UH 13	
	Biological Safety Officer	97,157	97,157	81,037		105,144	UH 12	
	Rehabilitation Coordinator	100,131	100,131	77,439		100,132	UH 11	
	Quality Assurance Specialist	78,416	95,077	73,695		95,077	UH 10	
	Research Facilitator	92,664	95,077	73,695		95,077	UH 10	
	Diabetes Educator	76,544	76,544	69,784		89,981	UH 09	
	Mental Health Clinician	87,755	89,981	69,784		89,981	UH 09	
	Clinical Documentation Spec	70,075	84,947	65,812		84,948	UH 08	
	Neonatal Spec Resp Care	82,826	82,826	65,812		84,948	UH 08	
	Occupational Therapist 2-UHP	72,218	80,683	65,812		84,948	UH 08	
	Physical Therapist 2 - UHP	70,075	84,947	65,812		84,948	UH 08	
	Poison Information Spec	80,683	84,947	65,812		84,948	UH 08	
	Executive Staff Asst	67,925	79,040					CFD
	Therapeutic Recreation Spec	84,947	84,947	65,812		84,948	UH 08	
	Athletic Trainer	57,117	57,117	53,477		69,784	UH 05	
<b>3F</b>								
	Clinical Research Assoc 2	84,552	98,821	84,552		110,220	UH 13	
	Research Associate 2	84,552	110,219	84,552		110,220	UH 13	
	Clinical Research Assoc 1	73,694	85,530	73,695		95,077	UH 10	
	Research Associate 1	73,694	95,077	73,695		95,077	UH 10	
	Clinical Research Asst 3	65,811	82,826	65,812		84,948	UH 08	
	Research Assistant 3	67,954	84,947	65,812		84,948	UH 08	
	Clinical Research Asst 2	57,595	74,838	57,596		74,839	UH 06	
	Research Analyst	71,011	74,838	57,596		74,839	UH 06	
	Research Assistant 2	57,595	74,838	57,596		74,839	UH 06	
	Clinical Research Asst 1	49,462	63,045	49,463		64,730	UH 04	
	Research Assistant 1	49,462	64,730	49,463		64,730	UH 04	
<b>3G</b>								
	Cytotechnologist	89,981	89,981	69,784		89,981	UH 09	
	Histotechnologist	65,811	84,947	65,812		84,948	UH 08	
	Medical Technologist 2	65,811	84,947	65,812		84,948	UH 08	
<b>3H</b>								
	Supervising Accountant - UHP	102,482	105,144	81,037		105,144	UH 12	
	Reimbursement Analyst 2	82,451	95,077	77,439		100,132	UH 11	
	Assoc Accountant	97,864	97,864	76,087		97,864	AR 26	
	Grants & Contracts Specialist	97,864	97,864	76,087		97,864	AR 26	
	Fiscal Supervisor	83,179	92,664	73,695		95,077	UH 10	
	Staff Accountant 3	76,544	76,544	69,784		89,981	UH 09	
	Accountant	70,762	85,280	65,978		85,280	AR 23	
	Fiscal Admin Off	80,392	80,392	65,978		85,280	AR 23	
	Supervisor, Patient Access	72,218	72,218	65,812		84,948	UH 08	
	Supv Patient Svcs Accts	65,811	84,947	65,812		84,948	UH 08	
	Budget Analyst	67,787	67,787	61,735		79,893	UH 07	
	Fiscal Coordinator	63,752	63,752	61,735		79,893	UH 07	

	TITLE	ANNUAL SALARY		COMPENSATION SCHEDULE				
		MIN	MAX	MIN	-	MAX	UNCLASSIFIED	CLASSIFIED
	Reimbursement Analyst 1	61,734	75,878	61,735		79,893	UH 07	
	Staff Accountant 2	63,752	79,893	61,735		79,893	UH 07	
	Staff Accountant 1	57,595	57,595	57,596		74,839	UH 06	
	Patient Svcs Accounts Coord	55,307	69,784	53,477		69,784	UH 05	
	Internal Auditor	83,000	83,000					CFD
	Internal Auditor 1 - Medical	76,076	76,076					CFD
<b>31</b>								
	Librarian 4	110,219	110,219	84,552		110,220	UH 13	
	Procurement Contract Spec	81,037	91,770	81,037		105,144	UH 12	
	Radiation Safety Officer	99,778	99,778	81,037		105,144	UH 12	
	Sponsored Program Specialist	86,382	94,453	81,037		105,144	UH 12	
	Clin Simulation CTR Coordinato	82,451	82,451	77,439		100,132	UH 11	
	Community Health Prog Supvr	87,485	87,485	77,439		100,132	UH 11	
	Research Compliance Monitor 2	87,485	90,022	77,439		100,132	UH 11	
	Academic Curric Coordinator	76,045	80,787	73,695		95,077	UH 10	
	Clin Pas Ed Prog Specialist	80,787	80,787	73,695		95,077	UH 10	
	Env Health & Safety Spec	76,045	76,045	73,695		95,077	UH 10	
	Interpreter Services Coord	85,530	85,530	73,695		95,077	UH 10	
	Librarian 3	78,416	95,077	73,695		95,077	UH 10	
	Student Affairs Officer	87,942	87,942	73,695		95,077	UH 10	
	UCH Communications Specialist	83,179	92,664	73,695		95,077	UH 10	
	Educ & Development Spec.	78,770	89,981	69,784		89,981	UH 09	
	Healthcare/Project Analyst	69,784	69,784	69,784		89,981	UH 09	
	Program Manager Clinical Ed	76,544	76,544	69,784		89,981	UH 09	
	Registrar	87,755	87,755	69,784		89,981	UH 09	
	Research Compliance Monitor 1	78,770	89,981	69,784		89,981	UH 09	
	Administrative Officer	67,954	84,947	65,812		84,948	UH 08	
	Asst Radiation Safety Officer	84,947	84,947	65,812		84,948	UH 08	
	Coding Trainer	65,811	74,339	65,812		84,948	UH 08	
	Employee Assistance Counselor	82,826	82,826	65,812		84,948	UH 08	
	Librarian 2	67,954	72,218	65,812		84,948	UH 08	
	Planning Specialist	65,811	72,218	65,812		84,948	UH 08	
	Procurement Financial Officer	72,218	72,218	65,812		84,948	UH 08	
	Comm Based Educ Spec	61,734	69,805	61,735		79,893	UH 07	
	Practice Relations Liaison	61,734	65,770	61,735		79,893	UH 07	
	Web and Marketing Assoc	61,734	61,734	61,735		79,893	UH 07	
	Med Materials Mngmnt Supvr	65,270	65,270	57,596		74,839	UH 06	
	Medical Records Supervisor	65,270	69,098	57,596		74,839	UH 06	
	Training & QA Coordinator	69,098	69,098	57,596		74,839	UH 06	
	Childcare Head Teacher	69,784	69,784	53,477		69,784	UH 05	
	Childcare Teacher	46,093	54,662	41,829		54,663	UH 02	
	Assoc Compliance Officer	107,399	109,130					CFD
	Strategic Planner	96,002	96,926					CFD
	Compliance Specialist	91,935	91,935					CFD
	EEO Investigator	90,000	90,000					CFD
	Health Attorney	90,000	90,000					CFD
	HR Consultant	84,552	112,360					CFD
	Assistant to the EVP/Dean	79,040	79,040					CFD
	Personnel Specialist 2	75,000	91,404					CFD
	Talent Acquisition Specialist	71,943	84,370					CFD

	TITLE	ANNUAL SALARY		COMPENSATION SCHEDULE				
		MIN	MAX	MIN	-	MAX	UNCLASSIFIED	CLASSIFIED
	Administrative Officer	70,075	70,075					CFD
	Operations Assoc, Risk Mngmnt	66,252	66,252					CFD
	Personnel Specialist 1	64,000	65,427					CFD
<b>3J</b>								
	Admin and Clin Research Coord	72,218	72,218	65,812		84,948	UH 08	
	Adm Program Coordinator	62,000	70,052					CFD
	Adm Program Coordinator	61,734	79,893	61,735		79,893	UA 07	
	Administrative Coordinator(RC)	64,355	64,355	53,477		69,784	UH 05	
	Adm Program Coordinator	69,870	69,870	38,460		49,588	UH 01	
<b>3K</b>								
	Behav Hlth Part Hosp Prog Mngr	84,552	84,552	84,552		110,220	UH 13	
	Clin Soc Worker	63,591	85,940	72,676		98,218	HC 25	
	Professional Counselor	63,591	75,002	72,676		98,218	HC 25	
	Social Worker 2	69,784	89,981	69,784		89,981	UH 09	
	Clin Soc Worker Licensure Cand	57,275	57,275	63,128		85,655	HC 22	
	Social Worker 1	63,752	63,752	61,735		79,893	UH 07	
<b>3L</b>								
	IT Project Manager	94,765	125,362	94,765		125,362	UH 16	
	Project Manager 2, Campus Plan	107,453	120,307	91,375		120,308	UH 15	
	Project Manager, Campus Plan	107,453	107,453	91,375		120,308	UH 15	
	Application Analyst 3	100,131	115,274	88,005		115,274	UH 14	
	Application Architect	97,074	115,274	88,005		115,274	UH 14	
	Infrastructure Architect	88,005	115,274	88,005		115,274	UH 14	
	Application Analyst 2	84,552	104,520	84,552		110,220	UH 13	
	Application Developer 3	90,272	110,219	84,552		110,220	UH 13	
	Clinical Engineer	105,144	105,144	81,037		105,144	UH 12	
	Electrical Engineer	105,144	105,144	81,037		105,144	UH 12	
	Instructional Design Spec	81,037	94,453	81,037		105,144	UH 12	
	Application Analyst 1	77,438	100,131	77,439		100,132	UH 11	
	Business System Analyst	77,438	97,573	77,439		100,132	UH 11	
	CMHC Information Tech Admin	87,485	87,485	77,439		100,132	UH 11	
	Principal Trainer	77,438	100,131	77,439		100,132	UH 11	
	Technical Analyst 3	77,438	100,131	77,439		100,132	UH 11	
	Application Developer 2	83,179	95,077	73,695		95,077	UH 10	
	Instructional Technology Spec	90,314	90,314	73,695		95,077	UH 10	
	Technical Analyst 2	73,694	95,077	73,695		95,077	UH 10	
	Web Communication Officer 2	92,664	92,664	73,695		95,077	UH 10	
	UCH-Emergency Mngmnt Prog Spec	69,784	69,784	69,784		89,981	UH 09	
	Admin & Clin Sys Coord	65,811	74,339	65,812		84,948	UH 08	
	Architect/Electrical Designer	74,339	74,339	65,812		84,948	UH 08	
	Technical Analyst 1	65,811	84,947	65,812		84,948	UH 08	
	Application Developer 1	63,752	71,822	61,735		79,893	UH 07	
	Web Communication Officer 1	67,787	67,787	61,735		79,893	UH 07	
	Performance Improvement Specialist	87,000	87,000					CFD
	HRIS Administrator	77,238	80,263					CFD
	HRIS Specialist 2	67,014	72,191					CFD
<b>3M</b>								
	Nurse Practitioner	94,765	125,362	94,765		125,362	UH 16	
	Lead Nurse Practitioner	135,762	135,762	94,765		125,362	UL 16	

	TITLE	ANNUAL SALARY		COMPENSATION SCHEDULE				
		MIN	MAX	MIN	-	MAX	UNCLASSIFIED	CLASSIFIED
	Adv Nurse Practitioner	88,296	120,079	88,296		120,079	FP 30	
	Adv Nurse Practitioner	105,069	105,069	88,296		120,079	HC 30	
<b>4 - CLERICAL &amp; SECRETARIAL</b>								
<b>4A</b>								
	Office Assistant	40,747	53,477	40,748		53,477	CL 13	
<b>4B</b>								
	Lead Patient Svcs Rep	54,538	54,538	49,463		64,730	UH 04	
	Patient Access Representative	45,531	59,696	45,532		59,696	UH 03	
	Patient Svcs Representative	45,531	59,696	45,532		59,696	UH 03	
<b>4C</b>								
	Clerk Typist	36,546	46,197	36,546		46,197	CL 10	
	Clerk	34,653	43,368	34,653		43,368	CL 08	
<b>4D</b>								
	Executive Assistant	57,595	69,098	57,596		74,839	UH 06	
	Fiscal Admin Asst	70,741	70,741	55,599		70,741	AR 19	
	Adm Fiscal Assistant	53,477	69,784	53,477		69,784	UH 05	
	Supply Coordinator	52,832	64,730	49,463		64,730	UH 04	
	Library Technician Assistant	61,818	61,818	48,069		61,818	AR 16	
	Secretary 2	46,550	60,882	46,551		60,882	CL 16	
	Accounts Receivable Collector	50,253	54,954	45,532		59,696	UH 03	
	E.D. Admissions Specialist	48,693	59,696	45,532		59,696	UH 03	
	Spec Secretary (Medical)	53,893	55,245	44,450		58,282	CL 15	
	Telecommunication Dispatcher	44,450	53,893	44,450		58,282	CL 15	
	Secretary 1	43,992	55,806	42,536		55,807	CL 14	
	Fiscal Assistant	41,829	53,227	41,829		54,663	UH 02	
	Human Resources Assistant	50,378	50,378	41,829		54,663	UH 02	
	Medical Records Clerk	40,747	53,477	40,748		53,477	CL 13	
	Telephone Opr	49,587	49,587	39,167		49,588	FM 11	
	Mail Handler	46,488	46,488	39,167		49,588	TC 11	
	Telephone Opr	36,719	46,488	39,167		49,588	TC 11	
	Cash Accounting Clerk	42,078	49,317	38,730		49,317	CL 12	
	Data Entry Oper 1	42,994	47,694	37,607		47,695	CL 11	
	Telecom Operator	37,606	47,694	37,607		47,695	CL 11	
	Univ Helper	31,429	31,429	30,847		37,170	CL 04	
	Executive Assistant	58,000	77,584					CFD
<b>4E</b>								
	Adm Program Assistant 1	41,829	54,662	41,829		54,663	UH 02	
<b>4F</b>								
	Adm Program Assistant 3	49,462	64,730	49,463		64,730	UH 04	
	Adm Program Assistant 2	50,000	54,000					CFD
<b>4G</b>								
	Clinic Office Assistant	41,829	54,662	41,829		54,663	UH 02	
<b>5 - TECHNICAL &amp; PARAPROFESSIONAL</b>								
<b>5A</b>								
	Respiratory Therapy Supervisor	90,002	90,002	66,456		90,002	FK 23	
	Community Health Specialist	63,752	75,878	61,735		79,893	UH 07	
	Lead Respiratory Therapist	60,798	74,152	58,906		78,167	FK 20	
	Community Health Worker	57,117	60,757	53,477		69,784	UH 05	
	Respiratory Therapist	60,653	71,469	53,456		71,469	FK 18	

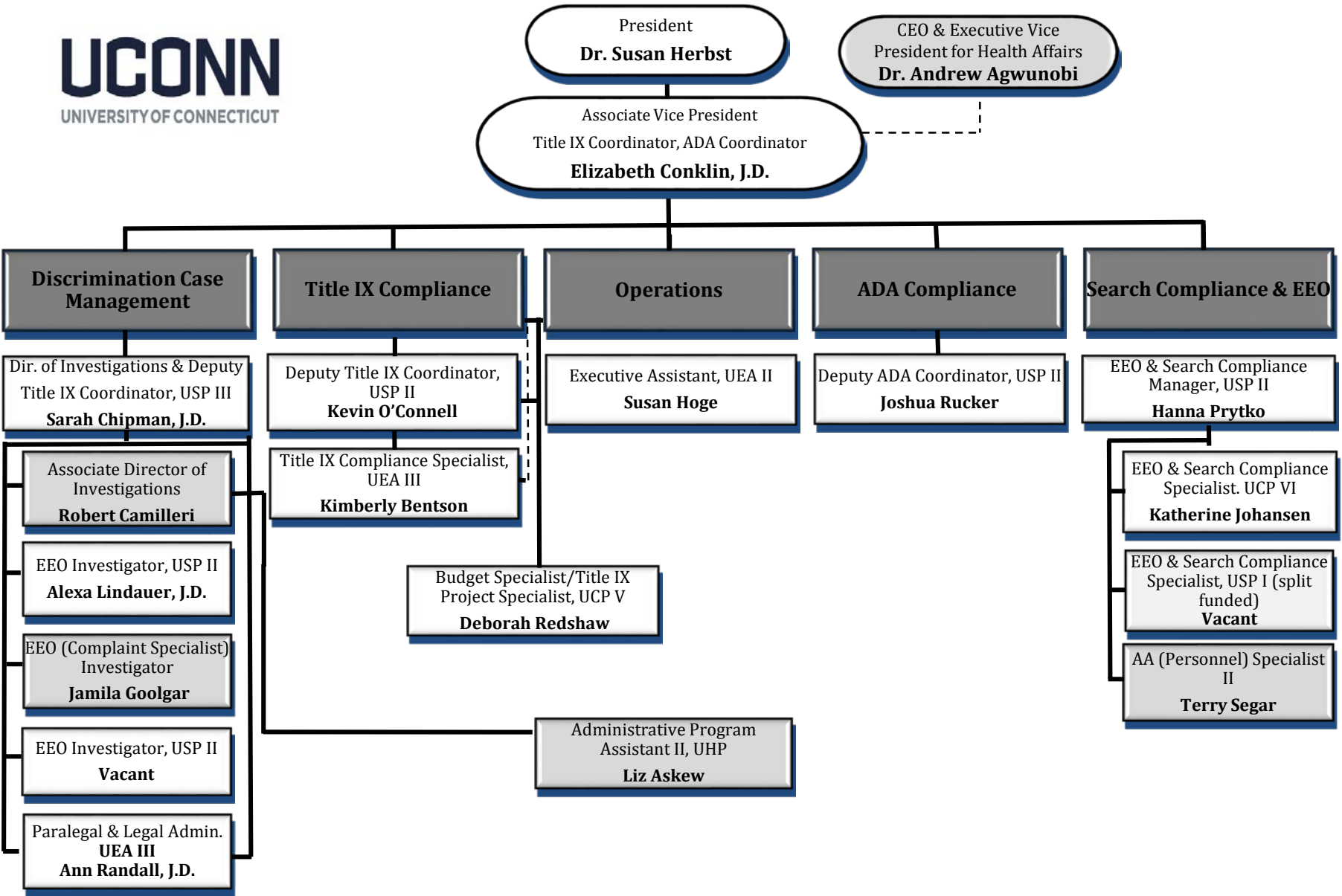
	TITLE	ANNUAL SALARY		COMPENSATION SCHEDULE				
		MIN	MAX	MIN	-	MAX	UNCLASSIFIED	CLASSIFIED
	MH Asst 1	46,938	55,692	48,527		65,354	HN 16	
	Clinical Research Technician	50,253	56,534	45,532		59,696	UH 03	
	Nurse Aide	44,179	59,883	44,180		59,884	FK 14	
<b>5B</b>								
	Mechanical Systems Specialist	105,144	105,144	81,037		105,144	UH 12	
	Radiation Therapy Supervisor	92,539	92,539	77,439		100,132	UH 11	
	Telecommunication Analyst/Coor	82,451	82,451	77,439		100,132	UH 11	
	Lead Cardiovascular Sonographe	95,077	95,077	73,695		95,077	UH 10	
	Biomedical Tech Specialist	76,544	89,981	69,784		89,981	UH 09	
	Cardio Sonographer	89,981	89,981	69,784		89,981	UH 09	
	Lead Nuclear Med Tech	89,981	89,981	69,784		89,981	UH 09	
	Radiation Therapy Technologist	76,544	81,016	69,784		89,981	UH 09	
	Embalmer/Coordinator	72,218	72,218	65,812		84,948	UH 08	
	Lead Computed Tomography Tech	65,811	65,811	65,812		84,948	UH 08	
	Lead Diagnostic Medical Sonogr	78,541	78,541	65,812		84,948	UH 08	
	Lead Network Telecomm Spec	84,947	84,947	65,812		84,948	UH 08	
	Lead Radiologic Tech - US/Sono	74,339	74,339	65,812		84,948	UH 08	
	Lead Radiologic Tech-IR/SP	84,947	84,947	65,812		84,948	UH 08	
	Lead Radiologic Tech-Mamo	67,954	67,954	65,812		84,948	UH 08	
	Lead Radiologic Technologist	65,811	78,541	65,812		84,948	UH 08	
	Nuclear Medicine Technologist	70,075	74,339	65,812		84,948	UH 08	
	Biomedical Technician 2	61,734	75,878	61,735		79,893	UH 07	
	Bone Densitometry Technologist	71,822	75,878	61,735		79,893	UH 07	
	Computed Tomography (CT) Tech2	71,822	79,893	61,735		79,893	UH 07	
	Computed Tomography Tech 1	67,787	67,787	61,735		79,893	UH 07	
	Diagnostic Med Sonographer	71,822	79,893	61,735		79,893	UH 07	
	DM Sonography Technlgst 2	61,734	79,893	61,735		79,893	UH 07	
	Mag Resonance Imaging Tech 2	63,752	79,893	61,735		79,893	UH 07	
	Spec Radiologic Tech-IR/SP	65,770	77,875	61,735		79,893	UH 07	
	Spec Radiologic Tech-Mamo	77,875	79,893	61,735		79,893	UH 07	
	Spec Radiologic Technologist	79,893	79,893	61,735		79,893	UH 07	
	Electronic Integrated Control	55,166	63,882	58,844		75,338	TC 20	
	Admin & Medical Specialty Tech	57,595	59,530	57,596		74,839	UH 06	
	Spec Dental Lab Tech	65,270	74,838	57,596		74,839	UH 06	
	Dental Lab Tech 2	74,714	74,714	56,056		74,714	FK 19	
	Autopsy/Pathology Technician	69,784	69,784	53,477		69,784	UH 05	
	Diagnostic Rad Tech	53,477	69,784	53,477		69,784	UH 05	
	Surgical Technologist 2	53,456	71,469	53,456		71,469	FK 18	
	BioMedical Technician I	56,243	56,243	49,463		64,730	UH 04	
	Cast Technician	54,538	64,730	49,463		64,730	UH 04	
	Histology Technician	64,730	64,730	49,463		64,730	UH 04	
	Medical Laboratory Technician	59,654	64,730	49,463		64,730	UH 04	
	Neurodiagnostic Tech	64,730	64,730	49,463		64,730	UH 04	
	Surgical Technologist 1	48,526	48,526	48,527		65,354	FK 16	
	Staff Radiological Tech	40,495	54,727	46,280		62,546	HN 15	
	Cardiac Testing Tech	59,696	59,696	45,532		59,696	UH 03	
	Ophthalmology Technician	45,531	59,696	45,532		59,696	UH 03	
	OR/Anesthesia Tech	44,179	59,883	44,180		59,884	FK 14	
	Cntrl Sterile Proc Instr Spec	42,224	57,346	42,224		57,346	FK 13	
	Research Technician	39,707	39,707	38,460		49,588	UH 01	

	TITLE	ANNUAL SALARY		COMPENSATION SCHEDULE				
		MIN	MAX	MIN	-	MAX	UNCLASSIFIED	CLASSIFIED
<b>5C</b>								
	Research Safety Spec 2	67,954	67,954	65,812		84,948	UH 08	
	Purchasing and Inventory Spec	73840	73,840	61,735		79,893	UH 07	
	Research Safety Spec 1	73840	79,893	61,735		79,893	UH 07	
	Lead Med Records Coding Tech	74,838	74,838	57,596		74,839	UH 06	
	Dental Auxiliary Instructor	57,117	60,757	53,477		69,784	UH 05	
	Preclinical Educ Specialist	69,784	69,784	53,477		69,784	UH 05	
	Med Rec Spec 2	66,518	66,518	51,252		66,519	CL 18	
	Information Specialist	64,730	64,730	49,463		64,730	UH 04	
	Laboratory Assistant 3	58,760	58,760	48,527		65,354	FK 16	
	Laboratory Assistant 4	57,184	57,184	48,527		65,354	HN 16	
	Pharmacy Technician Coord	46,280	52,915	46,280		62,546	FK 15	
	Coding Reimbursement Spec	45,531	59,696	45,532		59,696	UH 03	
	Medical Records Coding Tech	47,112	59,696	45,532		59,696	UH 03	
	Med Rec Spec 1	42,536	55,806	42,536		55,807	CL 14	
	Laboratory Assistant 2	46,883	57,346	42,224		57,346	FK 13	
	Pharmacy Technician	42,224	57,346	42,224		57,346	FK 13	
	Laboratory Assistant 3	42,388	50,177	42,224		57,346	HN 13	
	Phlebotomist - 1199	38,730	38,730	38,730		51,064	FK 11	
	Pharmacy Technician Trainee	36,400	36,400	36,400		47,653	FK 09	
	Diagnostic Imaging Assistant	32,885	32,885	32,885		42,183	FK 07	
<b>5D</b>								
	Medical Assistant	45,531	59,696	45,532		59,696	UH 03	
<b>5E</b>								
	Admin & Clin Sys Coord (RC)	83,262	83,262	69,784		89,981	UH 09	
	Academic Computing Spec III	70,075	70,075	65,812		84,948	UH 08	
	Research Database Manager	65,811	65,811	65,812		84,948	UH 08	
	Biomedical Communication Supvr	69,805	69,805	61,735		79,893	UH 07	
	Desktop Technician II	61,734	79,893	61,735		79,893	UH 07	
	Multimedia Specialist 2	79,893	79,893	61,735		79,893	UH 07	
	Network Telecom Specialist	63,752	65,770	61,735		79,893	UH 07	
	Academic Computing Spec II	57,595	57,595	57,596		74,839	UH 06	
	Library Technican 2	71,011	74,838	57,596		74,839	UH 06	
	Clinical Coordinator	53,477	69,784	53,477		69,784	UH 05	
	Computer Graphics Specialist	60,757	60,757	53,477		69,784	UH 05	
	Systems Coordinator	57,117	69,784	53,477		69,784	UH 05	
	Desktop Technician I	49,462	54,538	49,463		64,730	UH 04	
	Human Resources Associate	49,462	59,654	49,463		64,730	UH 04	
	Library Technician 1	49,462	64,730	49,463		64,730	UH 04	
	Multi Media Specialist 1	49,462	49,462	49,463		64,730	UH 04	
	Visual Media Designer	49,462	49,462	49,463		64,730	UH 04	
	Account Careers Trainee	54,101	54,101	45,823		59,156	AR 15	
	HR Coordinator	60,000	60,000					CFD
	Human Resources Associate	49,462	57,841					CFD
<b>5F</b>								
	Dental Hygienist	55,307	69,784	53,477		69,784	UH 05	
	Dental Hygienist 1	45,773	45,773	50,565		67,954	HC 17	
	Lead Dental Asst	53,643	65,354	48,527		65,354	FK 16	
	Dental Asst	44,179	59,883	44,180		59,884	FK 14	
	Dental Asst	41,478	52,398	44,180		59,884	HN 14	

	TITLE	ANNUAL SALARY		COMPENSATION SCHEDULE				
		MIN	MAX	MIN	-	MAX	UNCLASSIFIED	CLASSIFIED
<b>5G</b>								
	LPN	71,469	71,469	53,456		71,469	FK 18	
	LPN	46,774	64,322	53,456		71,469	HN 18	
<b>6 - SKILL CRAFTS</b>								
<b>6A</b>								
	Qual Crft Wrkr-HVACR	58,781	68,973	53,477		68,973	FM 18	
	Qual Crft Wrkr-A&E Mech	55,107	55,107	53,477		68,973	TC 18	
	Qual Crft Wrkr-Elect	50,135	64,662	53,477		68,973	TC 18	
	Qual Crft Wrkr-HVACR	50,135	61,581	53,477		68,973	TC 18	
	Qual Crft Wrkr-Lock	51,792	64,662	53,477		68,973	TC 18	
	Qual Crft Wrkr-Plumber	50135	64,662	53,477		68,973	TC 18	
	Qual Crft Wrkr-Carpenter	47795	61,874	50,981		65,999	TC 17	
	Qual Crft Wrkr-Painter	55,868	61,874	50,981		65,999	TC 17	
	Skilled Maintainer	46,040	53,040	44,388		57,949	TC 14	
<b>7 - SERVICE</b>								
<b>7A</b>								
	Police Lieutenant - Unclassifi	101,670	101,670	76,628		101,671	PS 19	
	University Fire Captain	73,008	90,938	73,008		97,116	PS 18	
	Police Master Sergeant	71,136	75,962	66,332		88,608	PS 16	
	Fire Lieutenant	72,530	79,248	63,295		84,615	PS 15	
	Police Sergeant - Unclassified	62,650	80,870	60,424		80,871	PS 14	
	Detective (Unclassified)	58,822	58,822	58,823		76,815	PS 13	
	Firefighter	58,822	76,814	58,823		76,815	PS 13	
	Police Officer - Unclassified	53,352	70,179	53,352		70,180	PS 11	
	Bldg & Grnds Patrol Off	41,558	53,789	40,082		53,789	PS 05	
<b>7B</b>								
	Supervising Custodian	46,040	54,327	44,388		57,949	TC 14	
	Lead Custodian	46,488	46,488	39,167		49,588	TC 11	
	Lead Custodian	33,053	33,053	39,167		49,588	TE 11	
	Custodian	34,730	43,388	37,045		46,280	TC 09	
	Custodian	31,258	31,259	37,045		46,280	TE 09	
<b>7C</b>								
	Material Mngmnt Supervisor	74,298	81,016	69,784		89,981	UH 09	
	MTCE Spv 2 HVAC	90,584	90,584	69,389		90,584	FM 24	
	MTCE Spv 2 Elect	65,052	65,052	69,389		90,584	TC 24	
	MTCE Spv 2 HVAC	69,674	69,674	69,389		90,584	TC 24	
	MTCE Spv 2 Plum	67,353	67,353	69,389		90,584	TC 24	
	Spvr, Sterile Proc & Distr	80,683	80,683	65,812		84,948	UH 08	
	MTCE Spv 1 HVA	78,874	82,805	63,336		82,805	FM 22	
	Maintenance Supv 2 (Grounds)	70,005	70,005	63,336		82,805	TC 22	
	MTCE Spv 2 Car	61,503	61,503	63,336		82,805	TC 22	
	Animal Care Supervisor	70,629	70,629	58,844		75,338	TC 20	
	Lab Animal Tech Svcs Spec	65270	65,270	57,596		74,839	UH 06	
	Asst Supervisor of CSSS	56056	56,056	56,056		74,714	FK 19	
	Mat Stor Supv 2	55,107	64,662	53,477		68,973	TC 18	
	Dental Supply Assistant	56,243	64,730	49,463		64,730	UH 04	
	LD Ctl St Sup Ad	61,651	61,651	48,631		63,149	FM 16	
	Stationary Engineer	45,591	55,010	48,631		63,149	TC 16	

	TITLE	ANNUAL SALARY		COMPENSATION SECHEDULE				
		MIN	MAX	MIN	-	MAX	UNCLASSIFIED	CLASSIFIED
	Environmntl Contrl Maintainer	46,426	60,486	46,426		60,487	FM 15	
	General Trades Worker	54,015	55,361	46,426		60,487	TC 15	
	Lead Transport Aide (RC)	62,546	62,546	46,280		62,546	FK 15	
	Duplicating Technician 2	41,613	46,040	44,388		57,949	TC 14	
	Animal Care Tech	39,780	52,085	42,432		55,557	TC 13	
	Lead Transport Aide	51,563	51,563	42,224		57,346	FK 13	
	Storekeeper	50,066	51,272	40,311		51,272	FM 12	
	Storekeeper	45,786	48,068	40,311		51,272	TC 12	
	Maintainer (Drive/Equip Oper)	36,719	46,488	39,167		49,588	TC 11	
	Animal Care Washroom Tech	42,286	47,965	38,106		47,965	FM 10	
	Animal Care Washroom Tech	34,299	34,299	38,106		47,965	FN 10	
	Lab Aide	40,934	49,358	37,565		49,359	FK 10	
	Lab Aide	40,968	40,968	37,565		49,359	HN 10	
	Cent Sterile Proc & Dist Aide	36,485	43,388	37,045		46,280	TC 09	
	Maintainer	37,421	43,388	37,045		46,280	TC 09	
	Storekeeper Assistant	34,730	43,388	37,045		46,280	TC 09	
	Cent Sterile Proc & Dist Aide	31,259	31,259	37,045		46,280	TE 09	
	Maintainer	31258	31258	37045		46280	TE 09	
	Transport Aide	37482	42848	36400		47653	FK 09	





## Office of Institutional Equity